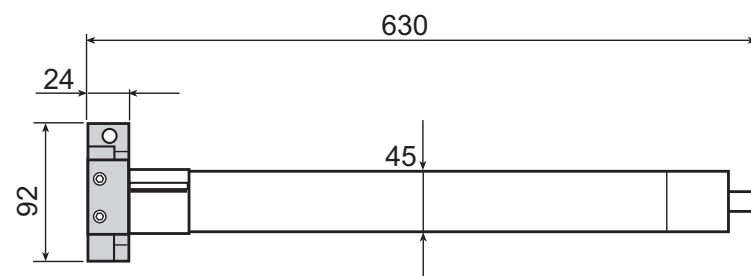


**Con manovra di soccorso**  
*With manual override*

**Facile da installare**  
*Easy to install*

## Ø45 CDE 45

**Motore tubolare Ø45 con finecorsa meccanico filare e manovra di soccorso idoneo per applicazioni su tende da sole e tapparelle.**  
*Tubular motor Ø45 with mechanical end limit switch and manual override suitable for awnings and rolling shutters.*



### Caratteristiche tecniche / *Technical features*

CODICE CODE	DESCRIZIONE DESCRIPTION	COPPIA TORQUE	VELOCITÀ SPEED	GIRI FC LS ROUNDS	ASSORBIMENTO CONSUMPTION	ALIMENTAZIONE POWER SUPPLY	GRADO DI PROT. PROT. DEGREE	LUNGHEZZA LENGTH	PESO MOTORE MOTOR WEIGHT	IMBALLO PACKAGE	CERTIFICAZIONE CERTIFICATION
2241407	CDE 10-16	10 Nm	16 Rpm	28	125 W	230 V ~ / 50 Hz	IP 44	630 mm	2,68 Kg	1 pz/pc	CE
2243484	CDE 20-16	20 Nm	16 Rpm	28	180 W	230 V ~ / 50 Hz	IP 44	630 mm	2,95 Kg	1 pz/pc	CE
2244126	CDE 25-16	25 Nm	16 Rpm	28	195 W	230 V ~ / 50 Hz	IP 44	630 mm	3,15 Kg	1 pz/pc	CE
2245397	CDE 30-16	30 Nm	16 Rpm	28	235 W	230 V ~ / 50 Hz	IP 44	630 mm	3,29 Kg	1 pz/pc	CE
2246135	CDE 35-16	35 Nm	16 Rpm	28	285 W	230 V ~ / 50 Hz	IP 44	630 mm	3,30 Kg	1 pz/pc	CE
2247332	CDE 40-16	40 Nm	16 Rpm	28	285 W	230 V ~ / 50 Hz	IP 44	630 mm	3,33 Kg	1 pz/pc	CE
2248093	CDE 45-12	45 Nm	12 Rpm	28	260 W	230 V ~ / 50 Hz	IP 44	630 mm	3,33 Kg	1 pz/pc	CE
2249342	CDE 50-12	50 Nm	12 Rpm	28	285 W	230 V ~ / 50 Hz	IP 44	630 mm	3,33 Kg	1 pz/pc	CE

### Applicazione Application

Tende da sole  
Awnings



### Dati prestazionali / Performance data

CODICE CODE	DESCRIZIONE DESCRIPTION	COPPIA TORQUE	VELOCITÀ SPEED	MOTORE MOTOR	TUBO TONDO ROUND TUBE	2 BRACCIA 2 ARMS	4 BRACCIA 4 ARMS	6 BRACCIA 6 ARMS
						SPORGENZA PROJECTION	SPORGENZA PROJECTION	SPORGENZA PROJECTION
2241407	CDE 10-16	10 Nm	16 Rpm	Ø 45	(*)	/	/	/
2243484	CDE 20-16	20 Nm	16 Rpm	Ø 45	(*)	/	/	/
2244126	CDE 25-16	25 Nm	16 Rpm	Ø 45	Ø 70	1,5 m	/	/
2245397	CDE 30-16	30 Nm	16 Rpm	Ø 45	Ø 70	2 m	/	/
2246135	CDE 35-16	35 Nm	16 Rpm	Ø 45	Ø 70	2,5 m - 3 m	/	/
2247332	CDE 40-16	40 Nm	16 Rpm	Ø 45	Ø 70	3,5 m - 4 m	2 m - 2,5 m - 3 m	/
2248093	CDE 45-12	45 Nm	12 Rpm	Ø 45	Ø 70	/	3,5 m	/
2249342	CDE 50-12	50 Nm	12 Rpm	Ø 45	Ø 70	/	4 m	2 m - 2,5 m

(\*) Prego contattare il nostro servizio tecnico / Please contact our technical support

### Applicazione Application

Tapparelle  
Rolling shutters



### Dati prestazionali / Performance data

CODICE CODE	DESCRIZIONE DESCRIPTION	COPPIA TORQUE	VELOCITÀ SPEED	MOTORE MOTOR	TUBO OTT. OCTO TUBE	PESO SOLLEVATO LIFTED WEIGHT	TUBO OTT. OCTO TUBE	PESO SOLLEVATO LIFTED WEIGHT
2241407	CDE 10-16	10 Nm	16 Rpm	Ø 45	Ø 60	12 - 20 Kg	/	/
2243484	CDE 20-16	20 Nm	16 Rpm	Ø 45	Ø 60	31 - 35 Kg	/	/
2244126	CDE 25-16	25 Nm	16 Rpm	Ø 45	Ø 60	36 - 45 Kg	/	/
2245397	CDE 30-16	30 Nm	16 Rpm	Ø 45	Ø 60	46 - 55 Kg	Ø 70	0 - 45 Kg
2246135	CDE 35-16	35 Nm	16 Rpm	Ø 45	Ø 60	56 - 63 Kg	Ø 70	46 - 55 Kg
2247332	CDE 40-16	40 Nm	16 Rpm	Ø 45	Ø 60	64 - 70 Kg	Ø 70	56 - 63 Kg
2248093	CDE 45-12	45 Nm	12 Rpm	Ø 45	Ø 60	71 - 80 Kg	Ø 70	64 - 70 Kg
2249342	CDE 50-12	50 Nm	12 Rpm	Ø 45	Ø 60	81 - 90 Kg	Ø 70	71 - 80 Kg

### Accessori Accessories

#### Staffe Brackets

p.74



#### Adattatori Adapters

p.78



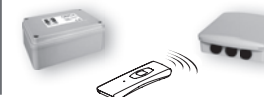
#### Meccanici Mechanicals

p.66 - 83



#### Controlli Controls

p.67



### Download

Selezionare 1 codice  
QR alla volta  
Select 1 single QR  
code each time

#### Manuale d'uso Instruction manual



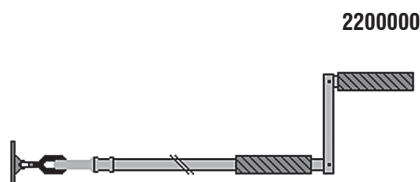
#### Dichiarazione di conformità Conformity declaration





**Motori tubolari**  
*Tubular motors*

## CDE-R - CDE 45 - CDE 59



**2200000**

**Asta snodata**  
*Crack handle*

CONF. 1 PZ / PACK. 1 PC



**2200008**

**Asta rigida con gancio**  
*Rigid handle with hook*

CONF. 1 PZ / PACK. 1 PC



**2200092**

**Piastra occhiello a cassonetto a 45°**  
*uscita occhiello dal lato inferiore*  
*45° joint with eye.*  
*Rising from the box floor.*

CONF. 1 PZ / PACK. 1 PC



**2200093**

**Piastra occhiello a cassonetto snodato a 90°.** *Uscita occhiello dal lato frontale del cassonetto*  
*90° joint with eye.*  
*Rising from the box front.*

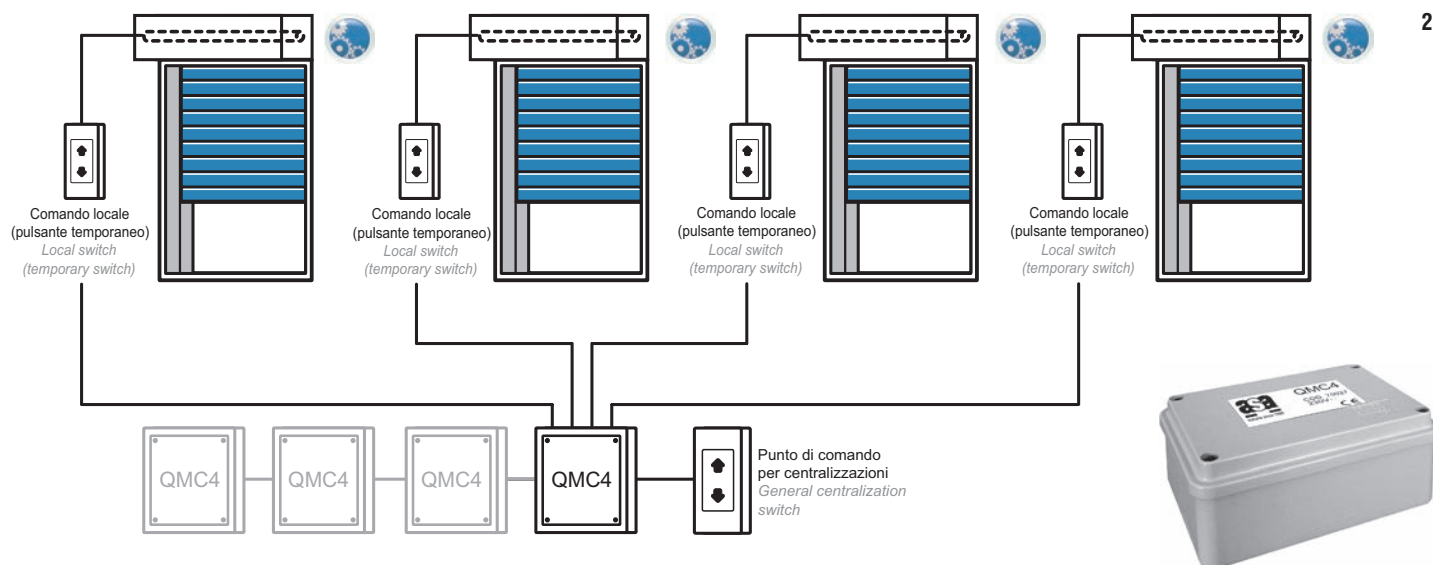
CONF. 1 PZ / PACK. 1 PC



**2204005**

**Barra quadra con occhiello**  
**L = 6 cm**  
*Square joint with short eye*  
*solar protection applications. L = 6cm*

CONF. 1 PZ / PACK. 1 PC



2212004

**QMC4**

**Centrale di controllo per il collegamento in parallelo di motori meccanici filari (max 4 motori per centrale).**  
*Control unit for mechanical wired motors connected in parallel (max 4 motors for each control unit).*

CONF. 1 PZ / PACK. 1 PC



2211016

**Go-er**

**Ricevente esterna per il controllo via radio di motori filari (1 motore per ricevente).**  
**Compatibile con tutti i controlli radio ASA**

*External receiver for radio control of wired motors (1 motor for each receiver).  
Compatible with all ASA radio controls.*

CONF. 1 PZ / PACK. 1 PC



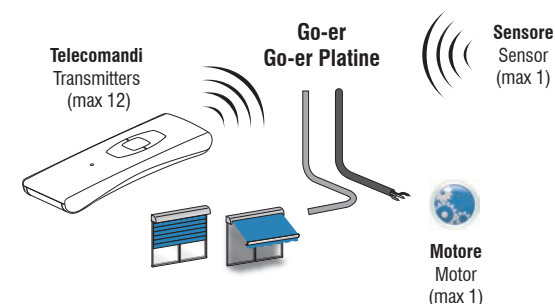
2211149

**Go-er platine**

**Ricevente esterna per il controllo via radio di motori filari, specifica per applicazioni su cassonetto (1 motore per ricevente).**  
**Compatibile con tutti i controlli radio ASA**

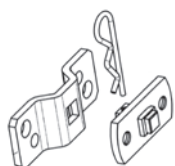
*External receiver for radio control of wired motors specific for cassette application (1 motor for each receiver).  
Compatible with all ASA radio controls.*

CONF. 1 PZ / PACK. 1 PC



**Motori tubolari**  
*Tubular motors*

## CDE-R - CDE 45 con manovra di soccorso / *with manual override*

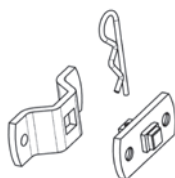


**2204115**



**Staffa con perno quadrato completa di culla.**  
**Interasse 48/60 mm** (solo per motori con manovra di soccorso)  
*Bracket with square pin center - to - center*  
*distance 48 / 60 mm (only for motors with manual override)*

CONF. 5 PZ / PACK. 5 PCS

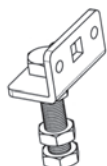


**2204118**



**Staffa con perno quadrato completa di culla.**  
**Interasse 48 mm e fori filettati** (solo per motori con manovra di soccorso)  
*Bracket with square pin threaded holes with center - to center*  
*distance 48 mm (only for motors with manual override)*

CONF. 5 PZ / PACK. 5 PCS

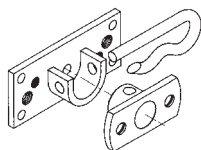


**2204121**



**Staffa con perno Ø 10 per innesto diretto**  
**su murature già esistenti**  
*Bracket with Ø 10 threading pin for the direct*  
*clutch on the existing clamp*

CONF. 5 PZ / PACK. 5 PCS

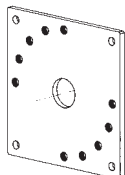


**2204147**



**Staffa con perno rotondo a due posizioni**  
*Bracket with two positions round pin*

CONF. 5 PZ / PACK. 5 PCS

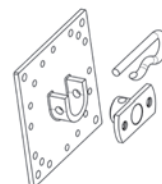


**2200043**



**Staffa 100 x 100**  
*100 x 100 bracket plate*

CONF. 5 PZ / PACK. 5 PCS

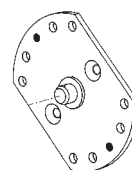


**2204124**



**Staffa 100 x 100 con sella per perno**  
**rotondo a due posizioni**  
*100 x 100 bracket with two positions round pin*

CONF. 5 PZ / PACK. 5 PCS

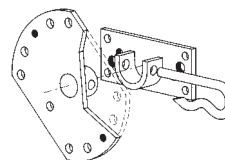


**2200010**



**Staffa con perno di supporto centrale**  
*Revolving bracket with central support pivot*

CONF. 5 PZ / PACK. 5 PCS

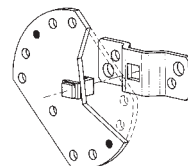


**2200003**



**Staffa orientabile con perno rotondo**  
**a due posizioni e relativa sella**  
*Revolving bracket with two positions round pivot*

CONF. 5 PZ / PACK. 5 PCS

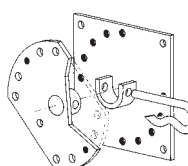


**2204051**



**Staffa orientabile con perno quadrato e relativa sella**  
*Revolving bracket with square pin and housing*

CONF. 5 PZ / PACK. 5 PCS



**2200076**



**Staffa orientabile con perno rotondo a due posizioni**  
**e sella su 100 x 100**  
*Revolving bracket with two positions round pivot and*  
*100 x 100 housing*

CONF. 5 PZ / PACK. 5 PCS



**Motori tubolari**  
*Tubular motors*

**CDE-R - CDE 45** con manovra di soccorso / *with manual override*

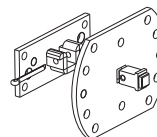


**2204152**



**Staffa regolabile verticalmente con perno rotondo a due posizioni**  
*Adjustable bracket with two positions round pin*

CONF. 5 PZ / PACK. 5 PCS

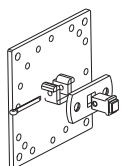


**2204211**



**Staffa regolabile verticalmente con perno quadrato a due posizioni**  
*Revolving bracket with two positions square pin*

CONF. 5 PZ / PACK. 5 PCS

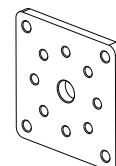


**2204200**



**Staffa 100x100 per perno quadrato**  
*100 x 100 bracket with square pin*

CONF. 5 PZ / PACK. 5 PCS

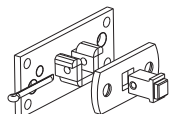


**2200161**



**Staffa quadrata interasse 48 box**  
*Square bracket 48 center to center box*

CONF. 5 PZ / PACK. 5 PCS

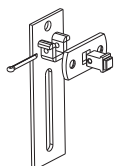


**2204204**



**Staffa con culla per perno quadrato.**  
**Interasse 48/60 mm**  
*Bracket with seat for square pin interaxis 48/60 mm*

CONF. 5 PZ / PACK. 5 PCS

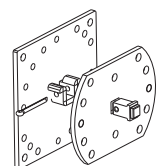


**2204208**



**Staffa regolabile verticalmente con perno quadrato**  
*Adjustable bracket with square pin*

CONF. 5 PZ / PACK. 5 PCS

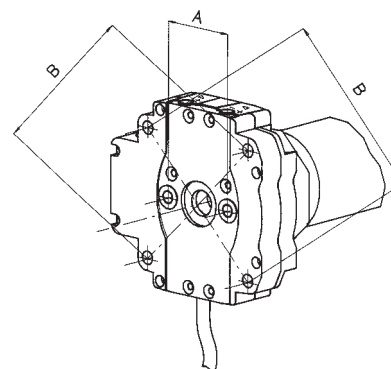


**2204210**



**Staffa orientabile con perno quadrato a due posizioni e sella su 100x100**  
*Revolving bracket with two positions square pin and 100 x 100 housing*

CONF. 5 PZ / PACK. 5 PCS



**Interasse A: da utilizzare per fissaggio motori con coppia fino a 50Nm.**

*Interaxis distance A: to fix motors with nominal torque up to 50 Nm.*

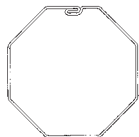
**Interasse B: da utilizzare tassativamente per i motori con coppia  $\geq 80$ Nm.**

*Interaxis distance B: to fix motors with nominal torque  $\geq 80$ Nm.*



**Motori tubolari**  
*Tubular motors*

**ET-S**



Ø60 x 1,5 mm



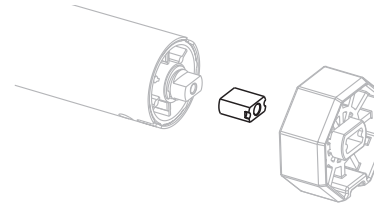
Corona e ruota / Crown and wheel



2204196

**Adattatori per tubo avvolgitore ottagonale**  
**Plastica**  
*Adapters for octagonal rolling tube*  
*Plastic*

CONF. 5 PZ / PACK. 5 PCS



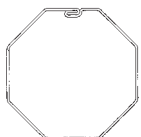
2204226

**ET-S Interfaccia per adattatori ASA**  
*ET-S interface for ASA adapters*

CONF. 5 PZ / PACK. 5 PCS

**Motori tubolari**  
*Tubular motors*

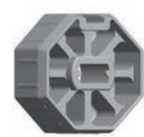
**ETR - ETR-A 45 - LPS-R - CDE-R - LP&P - LP&S - SUAW-EL - CD 45 - CDE 45**



Ø50 x 0,5 mm



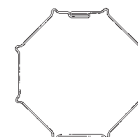
Corona e ruota / Crown and wheel



2204105

**Adattatori per tubo avvolgitore ottagonale**  
**Plastica**  
*Adapters for octagonal rolling tube*  
*Plastic*

CONF. 5 PZ / PACK. 5 PCS



Ø60 x 0,7 mm



Corona e ruota / Crown and wheel



2204061

**Adattatori per tubo avvolgitore ottagonale con spigoli rinforzati**  
**Metallo**  
*Adapters for octagonal with reinforced edges rolling tube - Metal*

CONF. 5 PZ / PACK. 5 PCS



Ø60 x 1,5 mm



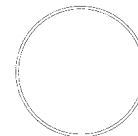
Corona e ruota / Crown and wheel



2204006

**Adattatori per tubo avvolgitore ottagonale**  
**Metallo**  
*Adapters for octagonal rolling tube*  
*Metal*

CONF. 5 PZ / PACK. 5 PCS



Ø50 x 1,5 mm



Ruota / Wheel

2204009

**Adattatore per tubo avvolgitore rotondo**  
**Plastica**  
*Adapter for round rolling tube*  
*Plastic*

CONF. 5 PZ / PACK. 5 PCS





**Motori tubolari**  
*Tubular motors*

**ETR - ETR-A 45 - LPS-R - CDE-R - LP&P - LP&S - SUAW-EL - CD 45 - CDE 45**



Ø70 x 1,5 mm

Corona e ruota / Crown and wheel

**Adattatori per tubo avvolgitore ottagonale**  
**Metallo**  
*Adapters for octagonal rolling tube Metal*

CONF. 5 PZ / PACK. 5 PCS



Ø60 x 1,5 mm

Corona e ruota / Crown and wheel

**Adattatori per tubo avvolgitore rotondo**  
**Metallo**  
*Adapters for round rolling tube Metal*

CONF. 5 PZ / PACK. 5 PCS



Ø60 x 1,5 mm

Corona e ruota / Crown and wheel

**Adattatori per tubo avvolgitore ottagonale per coppie fino a 30Nm**  
**Plastica**  
*Adapters for octagonal rolling tube for torques up to 30Nm tube - Plastic*

CONF. 5 PZ / PACK. 5 PCS



Ø63 x 1,5 mm

Corona e ruota / Crown and wheel

**Adattatori per tubo avvolgitore rotondo**  
**Metallo**  
*Adapters for round rolling tube Metal*

CONF. 5 PZ / PACK. 5 PCS



Ø70 x 1,5 mm

Corona e ruota / Crown and wheel

**Adattatori per tubo avvolgitore rotondo**  
**Metallo**  
*Adapters for round rolling tube Metal*

CONF. 5 PZ / PACK. 5 PCS



Ø64 x 0,6 mm

Corona e ruota / Crown and wheel

**Adattatori per tubo avvolgitore ZF**  
**Plastica**  
*Adapters for ZF profiled rolling tube Plastic*

CONF. 5 PZ / PACK. 5 PCS



Ø102 x 2 mm

Corona e ruota / Crown and wheel

**Adattatori per tubo avvolgitore rotondo**  
**Metallo**  
*Adapters for round rolling tube Metal*

CONF. 5 PZ / PACK. 5 PCS



Ø80 x 1/1,2 mm

Corona e ruota / Crown and wheel

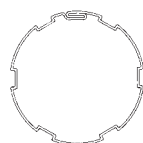
**Adattatori per tubo avvolgitore ZF**  
**Plastica**  
*Adapters for ZF profiled rolling tube Plastic*

CONF. 5 PZ / PACK. 5 PCS



**Motori tubolari**  
*Tubular motors*

**ETR - ETR-A 45 - LPS-R - CDE-R - LP&P - LP&S - SUAW-EL - CD 45 - CDE 45**



Ø65 x 1,5 mm

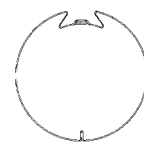


Corona e ruota / Crown and wheel

2200050

**Adattatori per tubo avvolgitore scanalato**  
**Metallo**  
*Adapters for profiled rolling tube*  
*Metal*

CONF. 5 PZ / PACK. 5 PCS



LP Ø62 x 0,6 mm



Corona e ruota / Crown and wheel

2204007

**Adattatori per tubo avvolgitore deprat - F2000**  
**Plastica**  
*Adapters for deprat rolling tube - F2000*  
*Plastic*

CONF. 5 PZ / PACK. 5 PCS



Ø54 x 0,5 mm



Corona e ruota / Crown and wheel

2204139

**Adattatori per tubo avvolgitore ZF**  
**Plastica**  
*Adapters for ZF profiled rolling tube*  
*Plastic*

CONF. 5 PZ / PACK. 5 PCS



LP Ø89 x 1 mm



Corona e ruota / Crown and wheel

2200056

**Adattatori per tubo avvolgitore deprat - F5039**  
**Metallo**  
*Adapters for deprat rolling tube - F5039*  
*Metal*

CONF. 5 PZ / PACK. 5 PCS



Ø78 x 1,5 mm



Corona e ruota / Crown and wheel

2204010

**Adattatori per tubo avvolgitore con ogiva schiacciata**  
**Metallo**  
*Adapters for round with groove rolling tube - Metal*

CONF. 5 PZ / PACK. 5 PCS



Ø78 x 1,5 mm



Corona e ruota / Crown and wheel

2204010

**Adattatori per tubo avvolgitore con ogiva tonda - Metallo**  
*Adapters for round with groove rolling tube - Metal*

CONF. 5 PZ / PACK. 5 PCS



Ø70 x 1,5 mm



Corona e ruota / Crown and wheel

2204078

**Adattatori per tubo avvolgitore con ogiva tonda - Plastica**  
*Adapters for rolling tube with round groove - Plastic*

CONF. 5 PZ / PACK. 5 PCS



Ø85 x 1,5 mm



Corona e ruota / Crown and wheel

2204138

**Adattatori per tubo avvolgitore con ogiva tonda - Metallo**  
*Adapters for round with groove rolling tube - Metal*

CONF. 5 PZ / PACK. 5 PCS



**Motori tubolari**  
*Tubular motors*

## ETR - ETR-A 45 - LPS-R - CDE-R - LP&P - LP&S - SUAW-EL - CD 45 - CDE 45



Ø70 x 1,5 mm



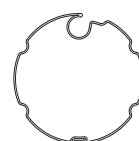
Corona e ruota / Crown and wheel



**2204083**

**Adattatori per tubo avvolgitore  
con ogiva tonda 15mm - Metallo**  
*Adapters for round with groove  
rolling tube 15mm - Metal*

CONF. 5 PZ / PACK. 5 PCS



Ø63 x 0,8 mm



Corona e ruota / Crown and wheel



**2204234**

**Adattatori per tubo avvolgitore  
ROLLER BAT - Plastica**  
*Adapters for ROLLER BAT  
rolling tube - Plastic*

CONF. 5 PZ / PACK. 5 PCS



Ø70 x 1,5 mm



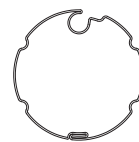
Corona e ruota / Crown and wheel



**2204008**

**Adattatori per tubo avvolgitore  
con ogiva tonda - Metallo**  
*Adapters for round with groove  
rolling tube - Metal*

CONF. 5 PZ / PACK. 5 PCS



Ø70 x 0,9 mm



Corona e ruota / Crown and wheel



**2204235**

**Adattatori per tubo avvolgitore  
ROLLER BAT - Plastica**  
*Adapters for ROLLER BAT  
rolling tube - Plastic*

CONF. 5 PZ / PACK. 5 PCS



Ø80 x 1 mm



Corona e ruota / Crown and wheel



**2204236**

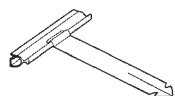
**Adattatori per tubo avvolgitore  
ROLLER BAT - Plastica**  
*Adapters for ROLLER BAT  
rolling tube - Plastic*

CONF. 5 PZ / PACK. 5 PCS



**Motori tubolari**  
*Tubular motors*

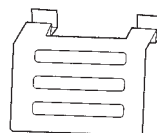
**ETR - LP&S-R - CDE-R - ET-S - LP&P - LP&S - CD 45 - CDE 45**



**2200022**

**Molla di fissaggio tubo  
per mini lame 9 mm**  
*Security spring for 9 mm slats*

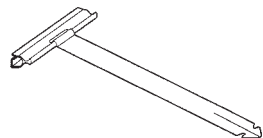
CONF. 1 PZ / PACK. 1 PC



**2200035**

**Gancio fissaggio cintino/tubo**  
*Belt - rolling tube fixing hook*

CONF. 1 PZ / PACK. 1 PC



**2200021**

**Molla di fissaggio tubo  
per lame standard 14 mm**  
*Security spring for 14 mm standard  
slats*

CONF. 1 PZ / PACK. 1 PC



**2200033**

**Blocco di sicurezza per tapparelle.**  
**A tapparella completamente  
abbassata impedisce il  
sollevamento dell'avvolgibile**  
*Security block for shutters*

CONF. 1 PZ / PACK. 1 PC



**2200146**

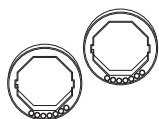
**Cintino rigido ZF**  
**per tubo ottagonale Ø 60**  
*ZF Rigid link*  
*for Ø 60 octagonal rolling tube*

CONF. 1 PZ / PACK. 1 PC



**Motori tubolari**  
Tubular motors

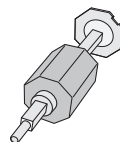
## ETR - LP&S-R - CDE-R - ET-S - LP&P - LP&S - CD 45 - CDE 45



2204092

**Coppia di adattatori montaggio rapido blocchi di sicurezza per tubo ottagonale Ø 60**  
*Set of two security block adapters for Ø 60 octagonal rolling tube*

CONF. 1 PZ / PACK. 1 PC



2204055

**Fondello regolabile in materiale plastico con perno tondo per tubo ottagonale Ø 60**  
*Adjustable plastic cap with pivot for Ø 60 octagonal rolling tube*

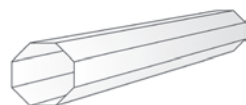
CONF. 1 PZ / PACK. 1 PC



2204054

**Fondello in materiale plastico con perno tondo per tubo ottagonale Ø 60**  
*Plastic cap with pivot for Ø 60 octagonal rolling tube*

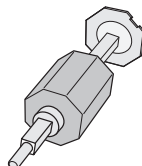
CONF. 1 PZ / PACK. 1 PC



2204094

**Barra 3m tubo ottagonale Ø 60**  
*3 m Ø 60 octagonal tube*

CONF. 4 PZ / PACK. 4 PCS



2200026

**Fondello regolabile in materiale plastico con perno tondo per tubo ottagonale Ø 70**  
*Adjustable plastic cap with pivot for Ø 70 octagonal rolling tube*

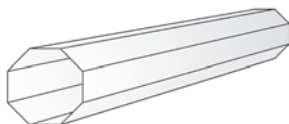
CONF. 1 PZ / PACK. 1 PC



2200024

**Fondello in materiale plastico con perno tondo per tubo ottagonale Ø 70**  
*Plastic cap with pivot for Ø 70 octagonal rolling tube*

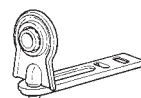
CONF. 1 PZ / PACK. 1 PC



2200017

**Barra 3m tubo ottagonale Ø 70**  
*3 m Ø 70 octagonal tube*

CONF. 4 PZ / PACK. 4 PCS



2200037

**Supporto a murare con cuscinetto**  
*Wall mounted support with ball bearing*

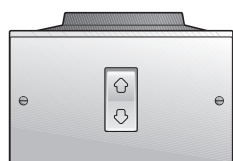
CONF. 1 PZ / PACK. 1 PC



2200038

**Supporto a parete con cuscinetto**  
*Surface mounted support with ball bearing*

CONF. 1 PZ / PACK. 1 PC



**2210003** Pulsantiera temporanea (incasso)  
*Temporary position switch (wall mounted)*

CONF. 1 PZ / PACK. 1 PC



**2210011** Pulsantiera in box stagno temporanea (parete)  
*Waterproof momentary position switch (surface mounted)*

CONF. 1 PZ / PACK. 1 PC



**2210004** Pulsantiera temporanea (parete)  
*Temporary position switch (surface mounted)*

CONF. 1 PZ / PACK. 1 PC



**2210012** Mini pulsantiera temporanea (parete)  
*Temporary position mini switch (surface mounted)*

CONF. 1 PZ / PACK. 1 PC



**2210007** Pulsante stabile  
*Fixed position switch*

CONF. 1 PZ / PACK. 1 PC



**2210013** Mini pulsantiera stabile (parete)  
*Fixed position mini switch (surface mounted)*

CONF. 1 PZ / PACK. 1 PC



**2210008** Pulsante temporaneo  
*Temporary position switch*

CONF. 1 PZ / PACK. 1 PC